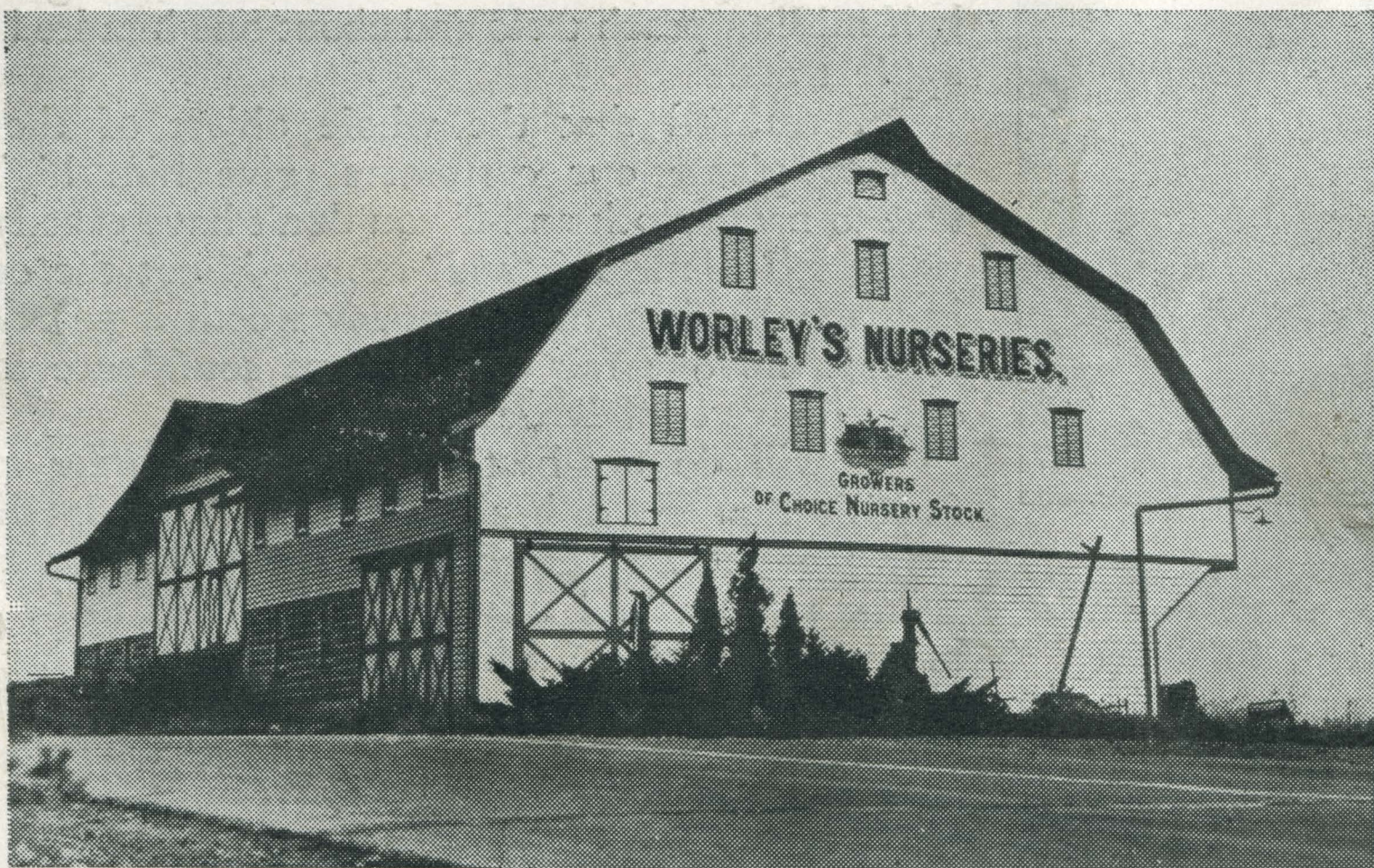


# WORLEY'S NURSERIES



*The Home of  
Quality  
Nursery Stock*

YORK SPRINGS, Adams County, PENNA.

PHONE 4-R-2



## A LETTER TO YOU FROM MR. WORLEY



My Dear Friends

It was back in 1913 when I started to grow fruit trees, and friends,—I am telling you I realized a lot of things since that day when I planted my first five bushels of peach seed and now, when we grow over a half million peach trees and about one hundred thousand apple trees.

I realized that the whole object of the business was to please our customers, give him high quality true to name stock and if you don't have exactly what he wants tell him. After all money is not the only thing in life, what is a pile of money worth if you don't have friends, no one for you to have confidence in and no one to have confidence in you.

I will do my best to have a customer satisfied—furnish him good healthy stock. This is the reason why we got Dr. Upshall of the Ontario Experiment Station to come down here to the nursery and inspect all our trees to be sure that they are true to variety. This is also why I am a little hesitant concerning the new fruit varieties until they have proven to be a success in my mind and in the minds of you prosperous orchardmen. It doesn't pay to speculate, why loose your money on an advertising splurge? You pay taxes which aid experiment stations in finding out whether these varieties will stand up to shipping, grading, packing, storing, harvesting, disease resistance, and numerous other things which every real orchardman wants to know before he plants. That's why you find all large orchards containing the majority of the better varieties such as J. H. Hale and Elberta.

We have purchased special machinery to furnish a higher quality product. Such implements as our new tree digger, sprayer, tractor cultivator, and fertilizer distributor.

All this leads to what the grower demands, —"Good quality nursery stock with the cheapest possible price," and I assure you he will get it at Worley's Nurseries.

Sincerely yours,

CHESTER B. WORLEY.

### REFERENCE

As to my reliability, I refer you to the Dillsburg National Bank, Dillsburg, Pa., the Postmaster, York Springs, Pa., or to my many pleased customers.



# *PENNSYLVANIA'S FINEST NURSERY*

On the front page of this catalog you will see a picture of our well ventilated and well insulated storage. This is undoubtedly the finest fruit tree storage in the east. It is here where we grade the trees and where I help and oversee the packing of each order giving it my special attention whether large or small, in order to be sure each customer gets exactly what he wants.

I am always glad if you can come to the Nursery for your trees, this makes it possible for each of us to go over every item together while the order is being filled and then you are sure you got exactly what you want.

Our Nursery is located along U. S. Highway route 15, about 16 miles from Gettysburg and about 21 miles from Harrisburg. When on this road just look for the white barn with our sign on it.





I do all the selecting of the buds to be sure at the start that they are true to name. My son and I travel over 5000 miles during the budding season to cut buds from selected superior strains of fruit. We go to the bearing orchard where the orchardmen, we are sure, can take better care of the bearing trees than we could, while all our time is consumed taking care of the nursery stock.

After the trees are grown we get Dr. Upshall, who is the greatest authority in the world on peach varietal identification, to inspect our whole Nursery, not just part of it, to be further convinced that our trees are true to name.

*Below is a letter of Certification that Dr. Upshall  
wrote to us concerning our trees.*

August 9, 1939.

This is to certify that Worley's Nurseries saleable stock of apple, pear, plum and cherry trees has been inspected for mixtures in the summer of 1939 and to the best of our knowledge is true-to-name as it stands in the nursery row.

It is impossible to positively distinguish all varieties of peaches in the nursery row, but the saleable peach trees have been carefully examined and are thought to be true-to-name.

W. H. UPSHALL

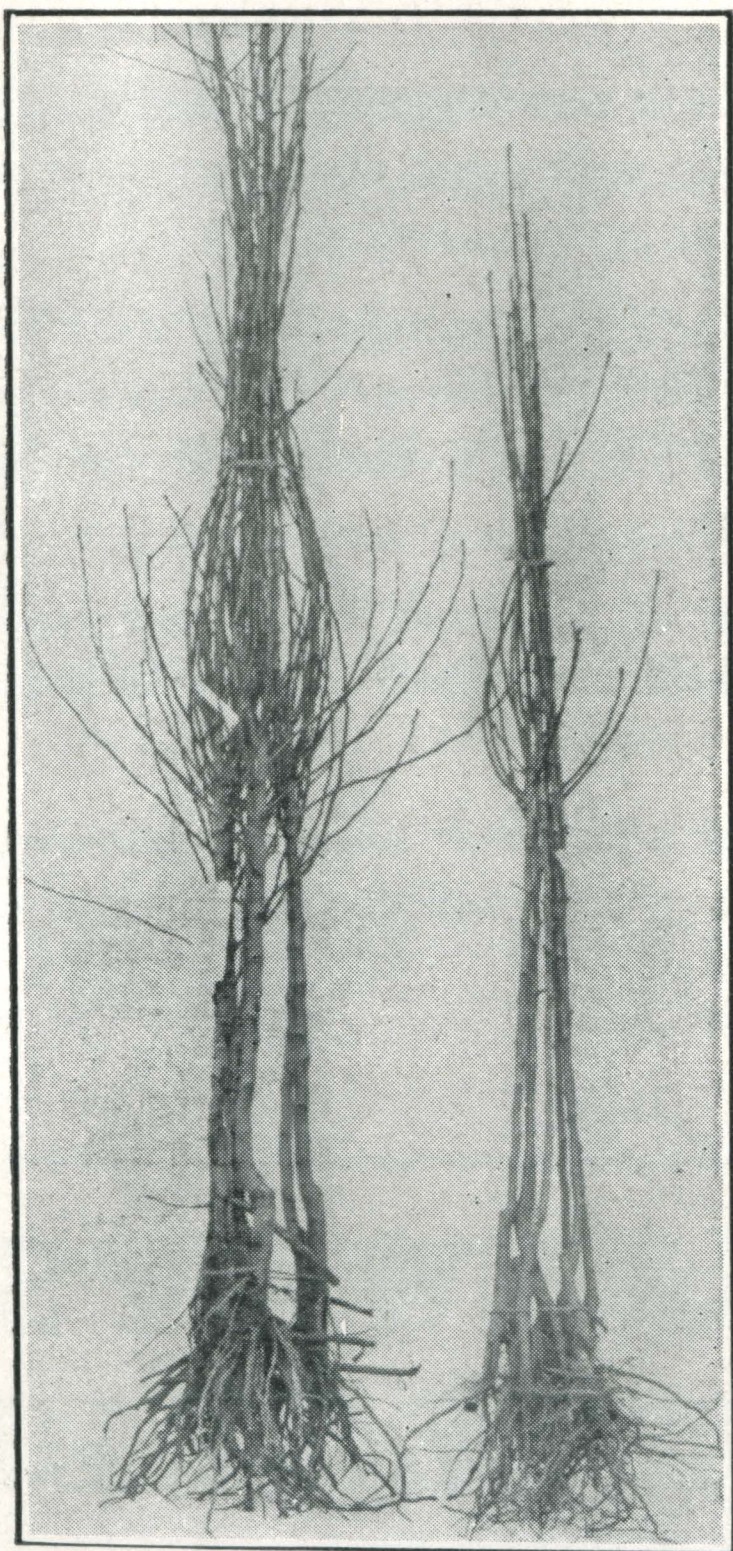


By taking every precaution that is possible we believe that our trees are as true to name as those in any other Nursery in the United States; but in the event any of our stock should prove untrue to name under which it is labeled or sold we will replace the original order for such stock. Further than this we are not responsible.

## ***ROOTS OF VALUE***

---

***Your money is invested  
in the pride of  
our Nursery***



Here is a picture of the beautiful trees that we have been and still are growing. With these well branched tops and a root system that we believe could not possibly be improved upon we thought we were giving our customers the best possible tree money could buy, but now since we have purchased our new digger we are able to give our customers trees with a root system far superior to anything we have ever dreamed of. On the following pages we try to explain and show the difference between the old and the new.





THE OLD METHOD (Count the Horses)

That sure looks like a lot of horse power for a tree digger. A digger that we sunk 14 inches in the ground to get a good root system but even then with all the horses we were unable to give you as good a root system as we can today.

It has always been a problem and a difficult one for Nurseries to cut stock for shipping at any time except in times of the best weather conditions. This has caused delays and dissatisfaction between the Nursery and you the customer. It was impossible for us to dig in bad weather even with all these fine heavy mules and horses.

We have had to wait until the ground was in condition before we could remove the trees from the Nursery. This has caused a necessary delay which has been an inconvenience both to you and the Nurseryman.

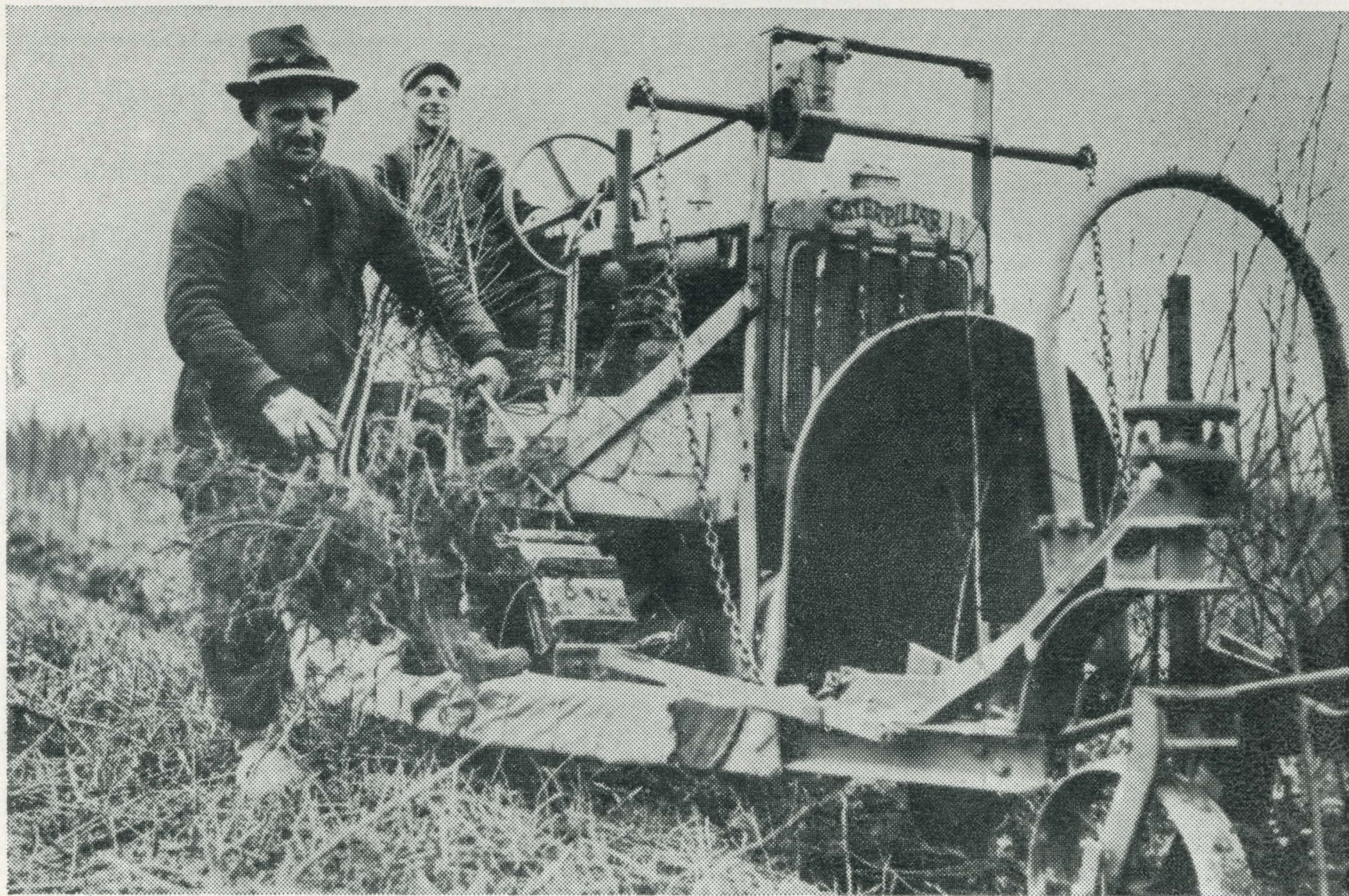
You would be surprised to see the ease with which our new "Super-Dreadnaught High Clearance Caterpillar Digger" removes these well branched fiborous roots from

---

YOU CAN ALWAYS B  
AT WORLEY

---





THE NEW METHOD (Better Roots)

our rich well fertilized Penn silt loam soil.

This makes it possible for us to get the trees ready for the customer just when he wants them and like he wants them. We are able to sink this digger to any depth in any weather condition that's necessary for the proper removal of stock; retaining the whole complete healthy root system. We have and can sink this digger to a depth of two feet into the soil.

No matter how good the top of the tree looks it must have healthy roots to assure proper growth. That is why we purchased this new digger and other necessary equipment such as our new power sprayer, etc. Making our Nursery one of the most modern, well equipped up-to-date in the country.

With the help of all this modern equipment we are able to furnish to you better stock at no additional cost.

---

BUY A PERFECT TREE  
S NURSERY

---



# APPLE TREES

Assorted kinds—2 Years Old

(The following prices are per tree)

		10	100	1,000
5 to 7 ft., 11/16 in. and up	-----\$.55 ea.	\$\$.45	\$.26	\$.24
4 to 5 ft., 9/16 to 11/16 in.	-----\$.50 ea.	.40	.22	.20
3 to 4 ft., 7/16 to 9/16 in.	-----\$.40 ea.	.30	.20	.15

Assorted kinds—1 Year Old

(The following prices are per tree)

		10	100	1,000
Extra select, 4 to 6 ft.	-----\$.50 ea.	\$\$.35	\$.25	\$.22
First class, 3 to 4 ft.	-----\$.40 ea.	.30	.20	.18
First Class, 2 to 3 ft.	-----\$.30 ea.	.25	.16	.14

## OUR LIST OF STANDARD VARIETIES

**DOUBLE RED DELICIOUS**—(Sometimes called the Stark's Delicious.) Winter apple, one of the fine quality apples. Brilliant dark red shading to yellow at the blossom end. \*\*\***STAYMAN WINESAP**—Large, mostly covered red, crisp and juicy. Tree a strong grower, ripens in October.

**NEW—RED STAYMAN**—Dark solid red. A bud sport of Stayman Winesap.

**SUMMER RAMBO**—Very large in size. Ripens Aug. 15th. Mellow and juicy.

**WINTER RAMBO**—Pale green, striped red; tender and crisp. Fine winter apple.

**SMOKE HOUSE**—One of the good old kind welcomed in every home. Ripens in September. Can be kept in common storage late into the winter.

**GRIMES GOLDEN**—Good size, yellow, of high quality. Ripens in September and can be kept late into the winter. A fine eating apple. Does best on low ground.

**WEALTHY**—Fall apple. Good medium size. Almost solid red. Bears young. Ripens August 1st to 15th.

**YELLOW TRANSPARENT**—Early summer, ripening early in July, skin clear yellow, flesh white, juicy and slightly acid. Do well in low ground.

**WINTER BANANA**—Creamy white with rosy cheek, excellent for home use, but not good for large commercial plantings. Fancy apple.

**EARLY RIPE**—One of the earliest summer apples, ripening from the first to the middle of July. Good size, pale yellow in color.

**BALDWIN**—An old-time favorite winter apple. Medium size, mottled red and yellow.

**NORTHERN SPY**—Large red winter apple. Crisp and juicy. A northern variety.

**PARADISE**—Large rosy cheeked, one of the best sweet winter varieties.

**R. I. GREENING**—Large winter, well adapted to all parts of the State.

**ROME BEAUTY**—Large round winter apple. Mottled and striped in different shades of red, flavor and quality fine. Good late keeper.

**GALLIA BEAUTY**—A Rome Beauty type.

**YORK IMPERIAL**—Winter apple, medium to large, yellow skin shaded red, firm, juicy, sub-acid.

Colors early (Bright red).

**YELLOW DELICIOUS**—Resembles the Red Delicious except in color. A fine eating apple. It is what the public wants.

**POUND APPLE**—Large old fashioned apple.

**McINTOSH**—Bright deep red; fine quality. Ripens in September and keeps late into the winter in common storage. Much used as filler.

**STARK**—Large, mostly colored red, crisp and juicy. Ripens in October.

**CRAB APPLE**—Good size, mid-season.

**JONATHAN**—Very red apple, smooth, of good size and fine quality. Ripens in September; can be kept in common storage late in the winter.

**CORTLAND**—A beautiful red. Hangs well to tree. A good winter keeper.

## CONSUMER-GROWER SPECIAL APPLE OFFER NO. 1

- 1 Yellow Transparent
- 1 Smokehouse
- 2 Summer Rambo
- 2 Grimes Golden

- 2 McIntosh
- 2 Red Delicious
- 5 Stayman
- 15 5-7 ft. trees

Here's a real selection for any one who wishes to save money growing their own apples and also make a few extra dollars each year.

ALL FOR ONLY \$5.95





Peach Trees That Really Bear Fruit

## PEACH TREES

Assorted kinds—1 Year Old  
(The following prices are per tree)

	Each	10	100	1,000
5 to 6 ft., 11/16 and up -----	\$.40	\$.35	\$.25	\$.18
4 to 5 ft. 9/16 and up -----	.35	.25	.17	.15
3½ to 5 ft., ½ to 9/16 in. -----	.32	.22	.15	.13
3 to 4 ft., 7/16 to ½ in. -----	.25	.20	.13	.10
2 to 3 ft., 5/16 to 7/16 in. -----	.20	.15	.10	.08
18 to 24 in. high -----	.13	.11	.07	.05

**GOLDEN JUBILEE**—Early, yellow freestone. Ripens last of July to early August. Good quality and firm.

**EARLY ELBERTA**—Fine yellow freestone. Ripens about 10 days before Elberta.

**ROCHESTER**—Fine yellow variety. Ripens early part of August. High quality.

**HILEY**—(Early Bell) Early large commercial freestone. Ripens last of July.

**J. H. HALE**—Large yellow with deep yellow flesh. Skin smooth, thick and without fuzz. Good shipper. Ripens about August 15th.

**ELBERTA** — (The old original Elberta). Large yellow. Firm and juicy. The leading commercial peach. Ripens from August 15 to September 1.

**LATE ELBERTA**—Large yellow, desirable market peach. Ripens last of September.



## PEACH TREES (Continued)

**FOX SEEDLING**—Good sized white, a fine flavor. Market variety. Ripens September 1 to 15.

**SHIPPER'S LATE RED**—Fine yellow freestone. Large size and good bearer. Ripens about September 1. Bigger and better than Hale in flavor and color and it is not susceptible to brown rot.

**SALWAY**—Late yellow and a good canning variety. Ripens late in October.

**ROBERTA**—A new large yellow peach. Ripens about September 1st.

**BRACKETT**—Good yellow freestone, good shipper. Ripens about September 20th.

**KRUMMEL'S OCTOBER**—Yellow freestone. Ripens first week in October.

**IRON MOUNTAIN**—Fine late white peach. Excellent for market. Ripens about September 20th.

**GREENSBORO**—White best early. Large and beautiful. Ripens latter part of July.

**BELLE OF GEORGIA**—Large white. Excellent flavor. Ripens August 1st to 15th. Outstanding commercial white peach.

**HEATH CLING**—Very large creamy white cling. Good canner. Ripens last of August.

**RED BIRD CLING**—Early white cling. Ripens about July 15th. Bright red, productive and often sells for a premium price.

**MAYFLOWER**—Early white peach. Ripens during the middle of July.

**ECLIPSE**—Yellow freestone peach. Good size. Ripens about same time as Hiley. (None available until Fall).

**CUMBERLAND** — White, semi-freestone. New variety introduced by the New Experimental Station.

**VETERAN**—Originated in Canada. Large, round, yellow flesh, freestone. Superior to Elberta. Ten days earlier than Elberta.

**WILMA**—Large yellow freestone. Ripens late in October.

**VALIANT**—Originated in Canada. A seedling of Elberta. Fruit is large, roundish oblate, yellow and red, firm, juicy, freestone. Productive. Two weeks ahead of Elberta.

**VEDETTE**—Originated in Canada. Seedling of Elberta. Three weeks before Elberta. Tree is productive. Fruit is large. Yellow flesh and freestone.

**EARLY HILEY**—A new Hiley peach, freestone and it ripens about a week before the old original Hiley.

**PRIMROSE**—Large yellow freestone, high quality, ripens about the time of Belle of Georgia.

**GAGE ELBERTA**—A bud sport of the Elberta. It ripens 2 to 3 days after the Elberta.

**RADIANCE (red)**—Large white fleshed freestone. High quality and good color. Ripens just after Carman.

**GOLDEN-EAST**—(N. J. 87) Large, high colored yellow freestone, ripens right after Golden Jubilee. Colors up early.

**TRIOGEN**—(N. J. 70) Deep red, highly colored. Yellow freestone peach. Ripens just before Hale-Haven, colors up and stays firm on tree for a week.

**SUMMER CREST**—(N. J. 94) Large yellow freestone. Gets red all over, world highest colored peach. Excellent flavor. Ripens just before Elberta.

**SOUTH HAVEN**—Yellow freestone with splendid flavor. Ripens early part of August. Excellent for roadside trade. Produces where Elberta frequently fails.

**HALE-HAVEN**—A cross between Hale and South Haven. Yellow freestone. Heavy Bearer. Large, high red color. An excellent shipper.

---

### PEACH TREE SPECIAL

2 Golden Jubilee  
2 South Haven  
2 Hale-Haven

2 J. H. Hale  
5 Elberta  
2 Shipper's Late Red

15 beautiful 5-6 ft. trees, extra select all for \$4.65. A real offer that will mean extra profits for you each year.

---



## CHERRY TREES

1 Year to 2 Year Old Trees

Sweet Cherries, No. 1 \$.50 \$.75 and \$1.00

Sour Cherries, No. 1 .30 .40 and .50

BING

BLACK TARTARIAN

GOVERNOR WOOD

LAMBERT

NAPOLEON

SCHMIDT'S BIGARREAU

WINDSOR

YELLOW SPANISH

LARGE MONTMORENCY—Sour. Penn-  
sylvania's most popular cherry.

## PEARS

1 and 2 Year Trees

Each 10 100

Extra Select -----\$.75 \$6.00 \$50.00

BARTLETT

CAPP'S FAVORITE

SECKEL

KIEFFER

## PLUMS

Each 10 100

Extra Select -----\$.75 \$5.50 \$50.00

BURBANK

BRADSHAW

ITALIAN PRUNE

GERMAN PRUNE

GREEN GAGE

## APRICOTS

1 and 2 Year Old Trees

PEACH

ALEXANDRIA

Extra Select, 4 to 6 ft. -----\$.75 Each

## QUINCES

2 Year Old Nicely Branched Trees

ORANGE

CHAMPION

Extra Select, 4 to 6 ft. ----- 85 cts. Each  
\$7.50 for 10

## CURRANTS

2 Year Old No. 1 Strong Bushes

PERFECTION

FAY

25 cts. each \$2.00 for 10 \$15.00 per 100

## GRAPE-VINES

2 Year Old No. 1

CONCORD

WORDEN

MOORE'S EARLY

NIAGARA

CATAWBA

20 cts. each \$1.50 for 10 \$9.00 per 100

ASK FOR PRICES ON

Gooseberries — Blackberries — Asparagus  
Strawberry Plants



5000 TREES PLANTED ----- 5000 TREES GROWING



We can furnish Shrubs and  
Shade Trees of all kinds.



## EVERGREENS

Leading varieties at special  
low prices.

A certificate of Nursery Inspection from the Department of Agriculture of Pennsylvania accompanies each shipment of nursery stock.

## ***QUALITY BEFORE QUANTITY***

Due to the fact that we have used every possible care and consideration in giving you the very finest tree it is possible to buy, we feel we are unable to offer you any additional discounts. However, since we have a slight surplus of stock this year we are offering you this quality, true to name, stock at the cheapest prices we have ever offered during our business career, - - but, if you place your order with us before April 1st and pay cash on delivery we will give you a discount of 2%.

**WE DON'T ASK YOU TO PAY FOR OUR NURSERY  
STOCK BEFORE YOU SEE IT.**